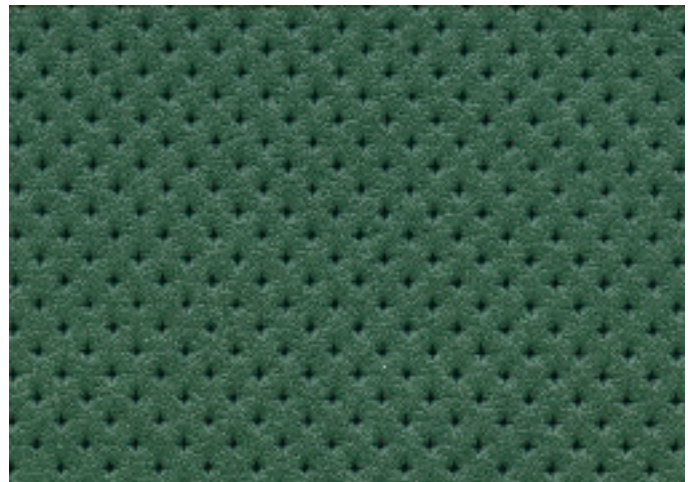


ELMORUSTICAL



ELMORUSTICAL is a classic upholstery leather that offers excellent sitting comfort and outstanding natural beauty.

As a Pure-Aniline, this product from ELMO has a beautiful grain variation, and proudly displays all the hallmarks of genuine leather such as fat wrinkles, growth marks, healed scars, insect bites, and scratches. These are the sign of nature's handiwork. ELMORUSTICAL becomes more beautiful with age.

Pure-Aniline leathers do not have a protective coating applied to the surface and are therefore more susceptible to sunlight. Care should be taken in high-traffic areas where food and drink spillage could stain the leather.

SPECIFICATIONS



AVERAGE HIDE SIZE	5 sqm
THICKNESS	1.3 - 1.5 mm
COLOURFASTNESS TO	
To-And-Fro Rubbing	Dry 4 / Wet 4
EN ISO 11640 + 11641	Perspiration 4
LIGHTFASTNESS	3
EN ISO 105-B02	
pH AND ΔpH	pH > 3.2 ΔpH ≤ 0.7
EN ISO 4045	
TEAR STRENGTH	> 20 N
EN ISO 3377-1	
FIRE RATINGS	
AS 1530 Pt.3	Ignitability 14
	Spread of Flame 0
	Heat Evolved 2
	Smoke Developed 4
AS/NZS 3837	BCA Group 1
(Cone Calorimeter)	Av. Specific Extinction area 186.7m ² /kg
Additional Fire ratings Available on request	ISO 8191: 1 & 2, EN1021-1 & 2 California Bulletin 117 Section E
COLOURS	23 (indent)



v300710
www.contemporaryleathers.com.au

contemporary  leathers

ENVIRONMENTAL BENEFITS

RAW MATERIALS

- 100% rapidly renewable / agricultural by-product

PRODUCTION

- Environmentally Improved Production Process: reduced energy consumption (5%), reuse / recycling of waster (95%), no hazardous substances such as pentachlororphenol (PCP), polychlorinated biphenyls (PCBs), formaldehyde, hexavalent chromium or chlorinated compounds are used.

HUMAN HEALTH

- Certified as low-VOC, meeting the Green Stars-Office Interiors emission requirements. Test certificate available on request.

DISPOSAL

- Reusable.

OTHER

- Produced at a tannery with an ISO 14001 certified Environmental Management System - ELMO's Environmental report is available on request
- For details on Contemporary Leathers EIS criteria please refer to our web site

CARE

- Avoid placing leather in direct sunlight, weather and at least 60cm from heat source
- Do not use harsh chemicals, shoe polish, saddle soap or unidentified leather cleaners, solvents and oils
- Keep free of dust and grit. Dust before cleaning. If vacuuming use a soft attachment.
- Gently remove all spills immediately with clean dry cloth (do not use damp cloth).
- Regularly clean contact areas such as arms and head rests to avoid build up of perspiration and body oils, which may discolour leather.
- We recommend professional cleaning with specialist leather cleaners and conditioners in strict accordance with manufacturer's instructions

