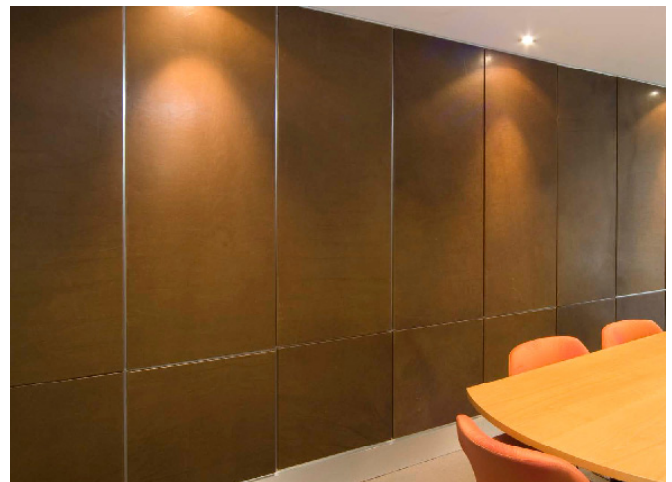


VERONA



VERONA is a Pure-Aniline leather that continues to enjoy extraordinary success in the Australian market place.

VERONA does not have the same feel that one would expect from a Pure-Aniline. This is due to the fact that it is vacuum-dried, rather than dried by the traditional oven method. Once in place VERONA takes on a supple, beautifully soft handle. The sheen, or gloss level is caused by this method of drying as is the unusual appearance on the underside of the hide. When stretched the gloss level is reduced thus giving an almost instant aged look. This is enhanced by the colour variation and the obvious presence of marks and scratches, that all combine to make this one of the more unusual leathers in the Contemporary Leathers collection.

VERONA is a leather that is ideally suited to both traditional and contemporary furniture having as it does a sophisticated rustic appearance. Each hide is different in both nature and extent of its natural markings and the colour variation that is synonymous with Pure-Aniline leather.

SPECIFICATIONS



AVERAGE HIDE SIZE	5.5 sqm
THICKNESS	1.0 - 1.2 mm
COLOURFASTNESS TO To-And-Fro Rubbing EN ISO 11640 + 11641	Dry 5 / Wet 4-5 Perspiration 5
LIGHTFASTNESS EN ISO 105-B02	3
pH AND ΔpH EN ISO 4045	pH 3.8 ΔpH 0.41
TEAR STRENGTH EN ISO 3377-1	32 N
FIRE RATINGS AS 1530 Pt.3	Ignitability 14 Spread of Flame 0 Heat Evolved 1 Smoke Developed 3
AS/NZS 3837 (Cone Calorimeter)	BCA Group 1 Av. Specific Extinction area 129 m2/kg
Additional Fire ratings	IMO Resolution A.652 (16)
COLOURS	18 (ex-stock)

ENVIRONMENTAL BENEFITS

RAW MATERIALS

- 100% rapidly renewable / agricultural by-product

PRODUCTION

- Environmentally Improved Production Process: water and energy reuse & recycling, renewable energy use (30%), non-potable water use (100%), no hazardous substances such as azo dyes, organochlorine compounds, pentachlorophenol (PCP), polychlorinated biphenyls (PCBs), formaldehyde, benzidine, hexavalent chromium, cadmium or chlorofluorocarbons (CFCs) are used.

HUMAN HEALTH

- Certified as low-VOC, meeting the Green Stars-Office Interiors emission requirements. Test certificate available on request.

DISPOSAL

- Reusable.

OTHER

- For details on Contemporary Leathers EIS criteria please refer to our web site

CARE

- Avoid placing leather in direct sunlight, weather and at least 60cm from heat source
- Do not use harsh chemicals, shoe polish, saddle soap or unidentified leather cleaners, solvents and oils
- Keep free of dust and grit. Dust before cleaning. If vacuuming use a soft attachment.
- Gently remove all spills immediately with clean damp (not wet) cloth. Do not scrub or rub hard.
- Regularly clean contact areas such as arms and head rests to avoid build up of perspiration and body oils, which may discolour leather.
- We recommend professional cleaning with specialist leather cleaners and conditioners in strict accordance with manufacturer's instructions